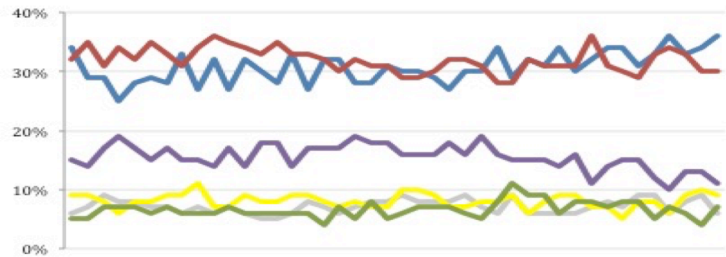


THE ASHCROFT NATIONAL POLL 20 APRIL 2015

1,000 adults were interviewed by telephone between 24 and 26 April 2015. Results have been weighted to be representative of all adults in Great Britain. Half of the interviews were conducted by landline and half by mobile phone. Results are weighted by recalled past vote at the last general election and stated likelihood to turn out at the next. A proportion of those who don't know or refuse to say how they will vote are re-allocated to the party they voted for at the 2010 general election. Full data tables are available at www.LordAshcroftPolls.com.

1. If there were a general election tomorrow, which party would you vote for? [Changes since 17 – 19 Apr]

Conservative	36% (+2)
Labour	30% (-)
Liberal Democrats	9% (-1)
UKIP	11% (-2)
Green	7% (+3)
Others	6% (-3)



Ashcroft National Poll, May 2014 – April 2015

2. The next general election will take place on May 7th 2015. When the general election comes, will you definitely vote [for the party you named] or might you end up voting differently?

	%	ALL	Men	Women	Con voters	Lab voters	LD voters	UKIP voters
Will definitely vote that way	67	70	64	71	68	51	79	
Might end up voting differently	33	30	36	29	32	49	21	

3. Which of the following statements do you most agree with?

% [changes since Feb '15]	ALL	Con voters	Lab voters	LD voters	UKIP voters	Swing voters*
I am satisfied with the job David Cameron is doing overall as PM	32 (+2)	68 (+8)	10 (-3)	34 (+8)	24 (+1)	29 (-1)
I am <u>dissatisfied</u> with the job DC is doing as PM but I'd still prefer to have him as PM rather than Ed Miliband	23 (-6)	31 (-7)	10 (-3)	35 (-11)	39 (-6)	32 (-4)
I am dissatisfied with the job DC is doing as PM and I'd prefer to have Ed Miliband as PM instead	29 (+2)	1 (-)	77 (+8)	25 (+7)	23 (+4)	25 (+2)

* Those who say they don't know how they will vote or may switch from their current party before the election.