

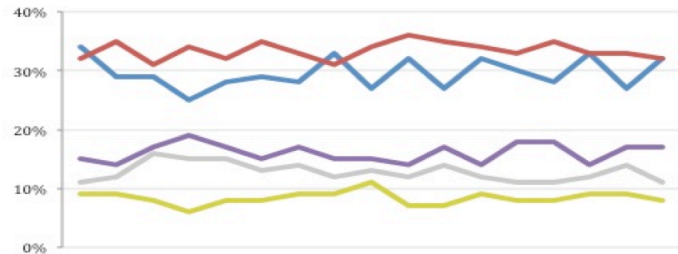
THE ASHCROFT NATIONAL POLL 29 SEPTEMBER 2014

1,000 adults were interviewed by telephone between 26 and 28 September 2014. Results have been weighted to be representative of all adults in Great Britain. Half of the interviews were conducted by landline and half by mobile phone. Results are weighted by recalled past vote at the last general election and stated likelihood to turn out at the next. A proportion of those who don't know or refuse to say how they will vote are re-allocated to the party they voted for at the 2010 general election. Full data tables are available at www.LordAshcroftPolls.com.

1. If there were a general election tomorrow, which party would you vote for?

[Changes since 19 –21 September]

Conservative	32% (+5)
Labour	32% (-1)
Liberal Democrats	8% (-1)
UKIP	17% (-)
Green	4% (-2)
Others	7% (-1)



Ashcroft National Poll, May – September 2014

2. The next general election will take place on May 7th 2015. When the general election comes, will you definitely vote [for the party you named] or might you end up voting differently?

%	ALL	Con voters	Lab voters	LD voters	UKIP voters
Will definitely vote that way	54	57	64	27	51
Might end up voting differently	46	43	36	73	49

3. Which of the following statements do you most agree with?

%	ALL	Con voters	Lab voters	LD voters	UKIP voters	Swing voters*
I am satisfied with the job David Cameron is doing overall as Prime Minister	33	69	16	32	21	32
I am dissatisfied with the job that David Cameron is doing overall as PM, BUT I'd still prefer to have him as PM than have Ed Miliband	29	28	16	39	57	37
I am dissatisfied with the job that David Cameron is doing overall as PM – AND I'd prefer to have Ed Miliband as PM instead	26	3	65	28	12	21

4. Thinking about the coalition government since 2010, made up of Conservatives and Liberal Democrats, do you think the Liberal Democrats have had too much influence over the decisions of the government, or not enough influence, or about the right amount of influence?

%	ALL	Con voters	Lab voters	LD voters	UKIP voters	Swing voters*
The Lib Dems seem to have too much influence within the coalition government	16	26	7	3	29	18
The Lib Dems seem to have the right amount of influence within the coalition	33	51	27	27	25	32
The Lib Dems do not seem to have enough influence within the coalition	40	21	58	66	44	42
Don't know	10	2	8	5	2	8

* "Swing voters" do not know how they will vote or say they may yet change their mind.